

PARK MODEL RVS

# SEDONA

## SERIES



The Sedona Series come standard with 9' flat ceilings throughout, square front pop-out front-end elevations and a variety of bays and kitchen styles. In addition, Sedona features include residential-size appliances, hardwood raised panel cabinet doors and a variety of laminate countertop choices.

# SEDONA SERIES

# 120SN11351A

BEDS / BATHS / SQFT

1 / 1 / 399

BOX SIZE

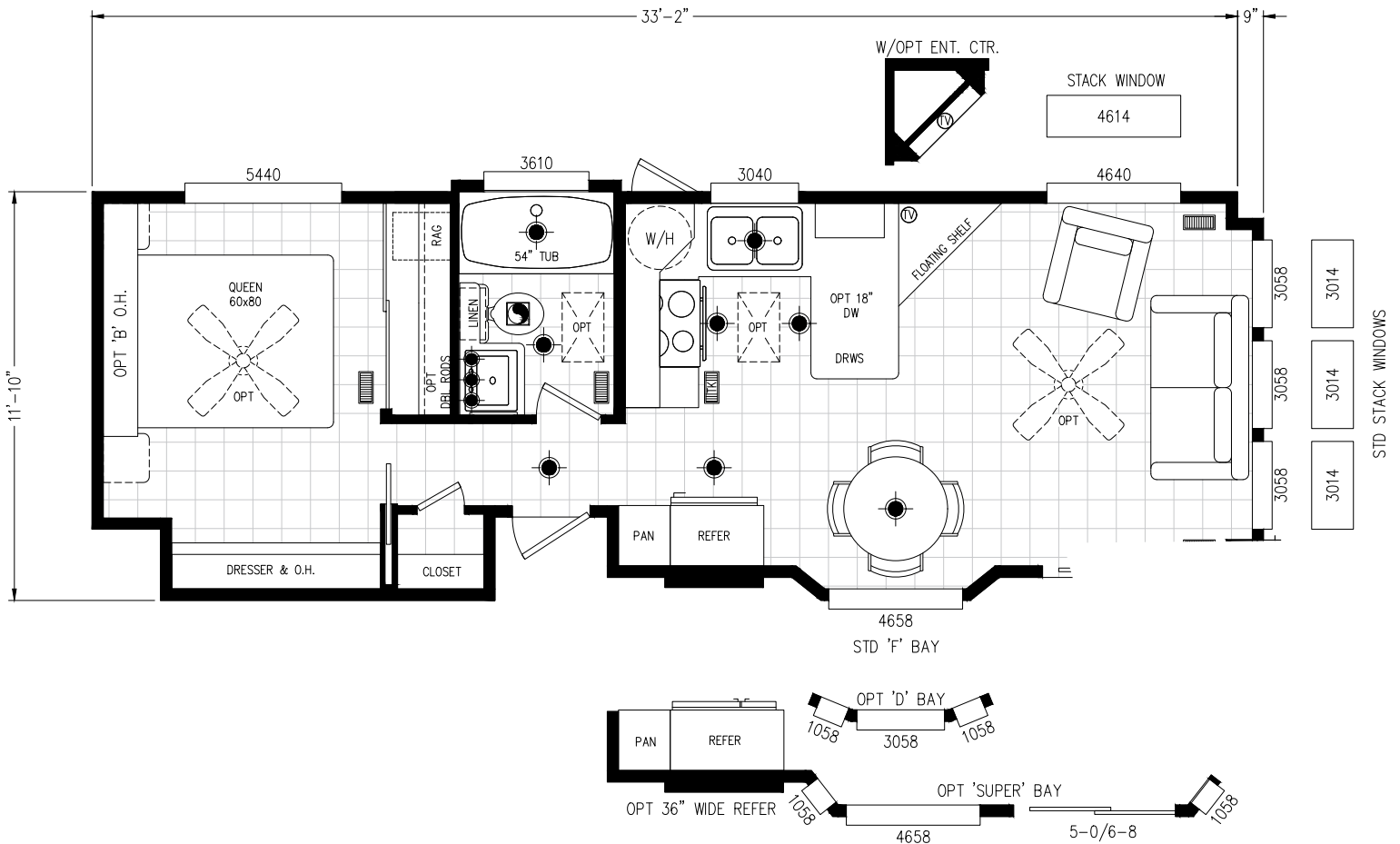
11'9" - 33' 4"

KITCHEN STYLE

U Kitchen

ENTRANCE

Side





# SEDONA SERIES

# 120SN11351C

BEDS / BATHS / SQFT

1 / 1 / 399

BOX SIZE

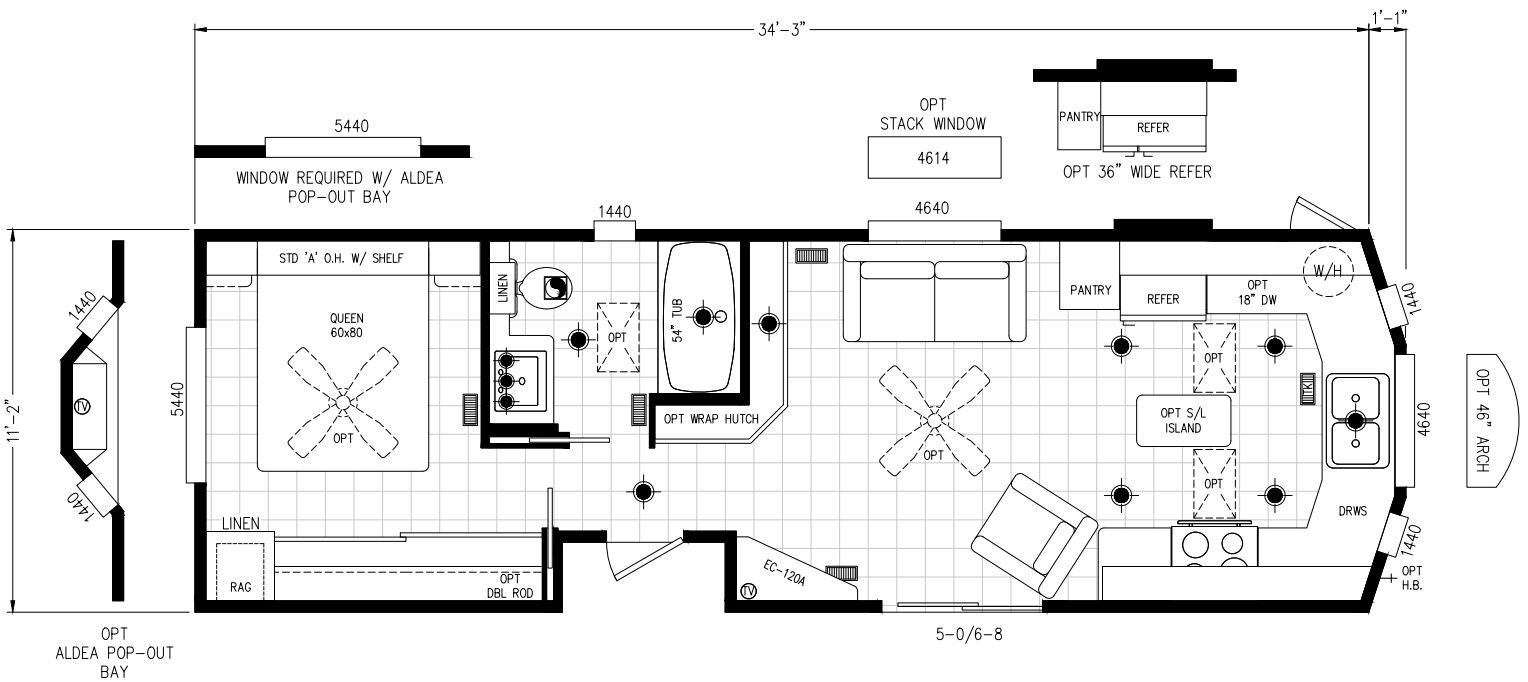
11' 2" - 34' 3"

KITCHEN STYLE

Horseshoe Front

ENTRANCE

Side



# SEDONA SERIES

# 120SN11351D

BEDS / BATHS / SQFT

1 / 1 / 399

BOX SIZE

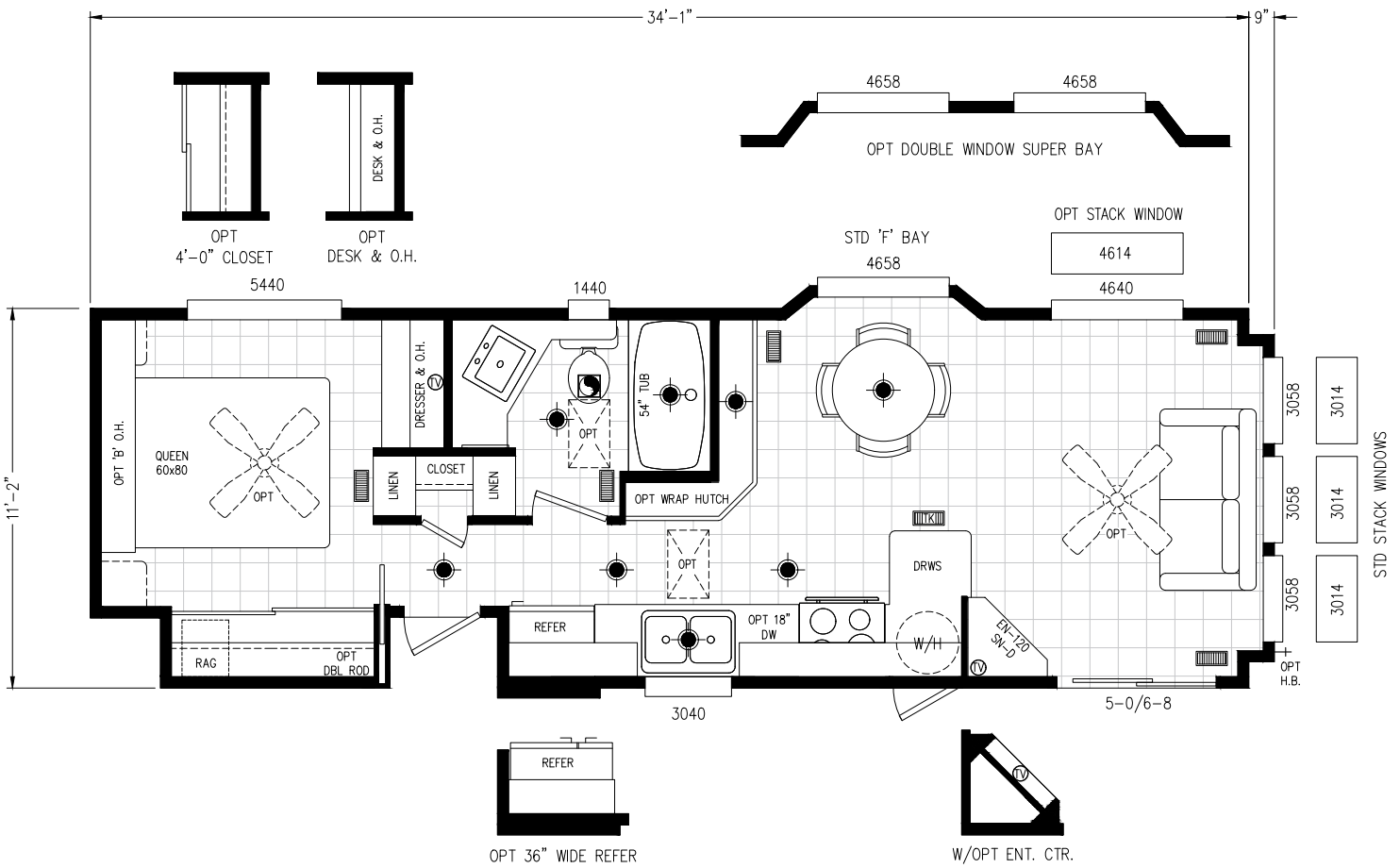
11' 2" - 34' 1"

KITCHEN STYLE

Galley

ENTRANCE

Side



# SEDONA SERIES

# 120SN11351E

BEDS / BATHS / SQFT

1 / 1 / 399

BOX SIZE

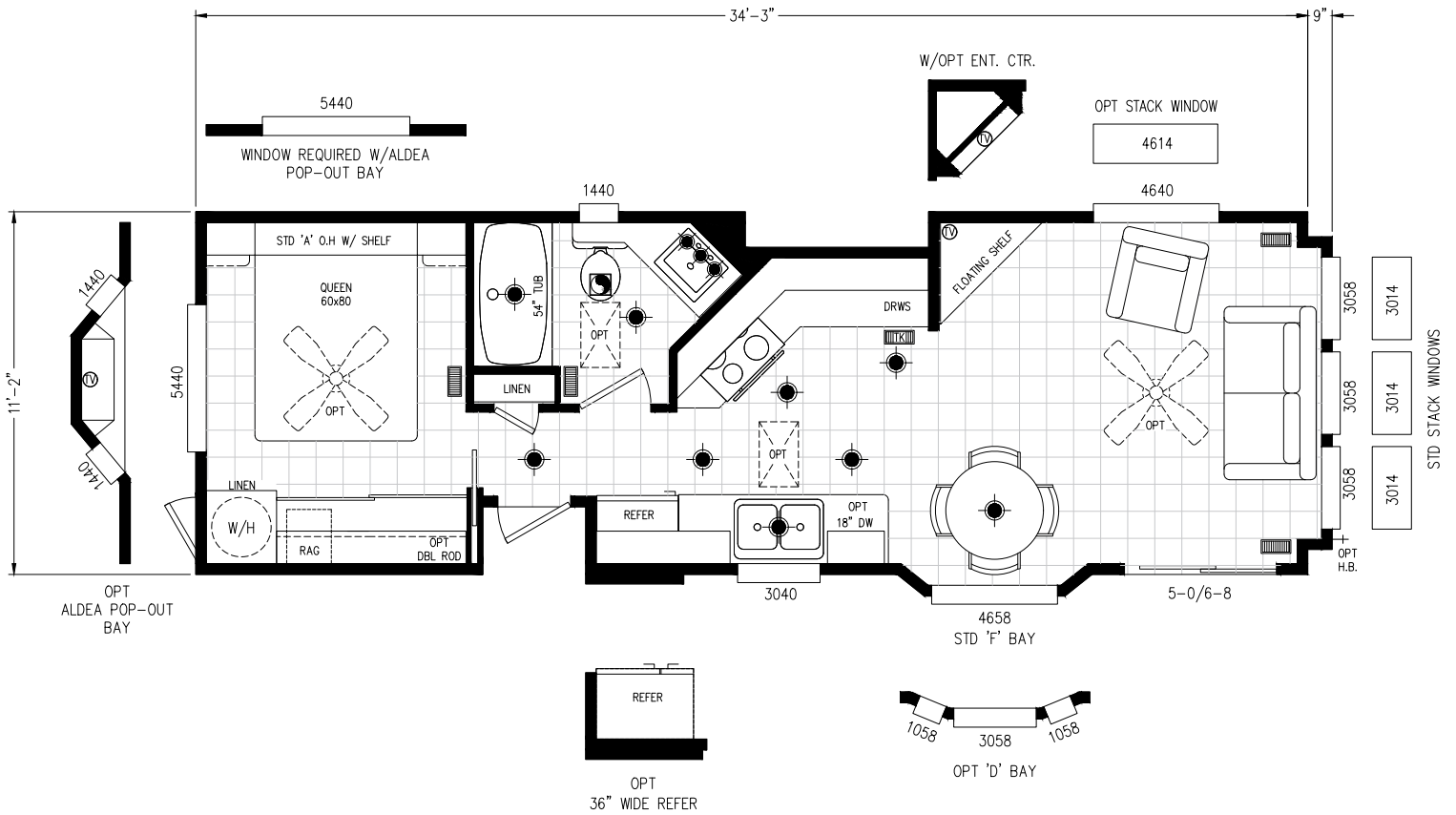
11' 2" - 34' 3"

KITCHEN STYLE

Alley Galley

ENTRANCE

Side



# SEDONA SERIES

# 120SN11351G

BEDS / BATHS / SQFT

1 / 1 / 399

BOX SIZE

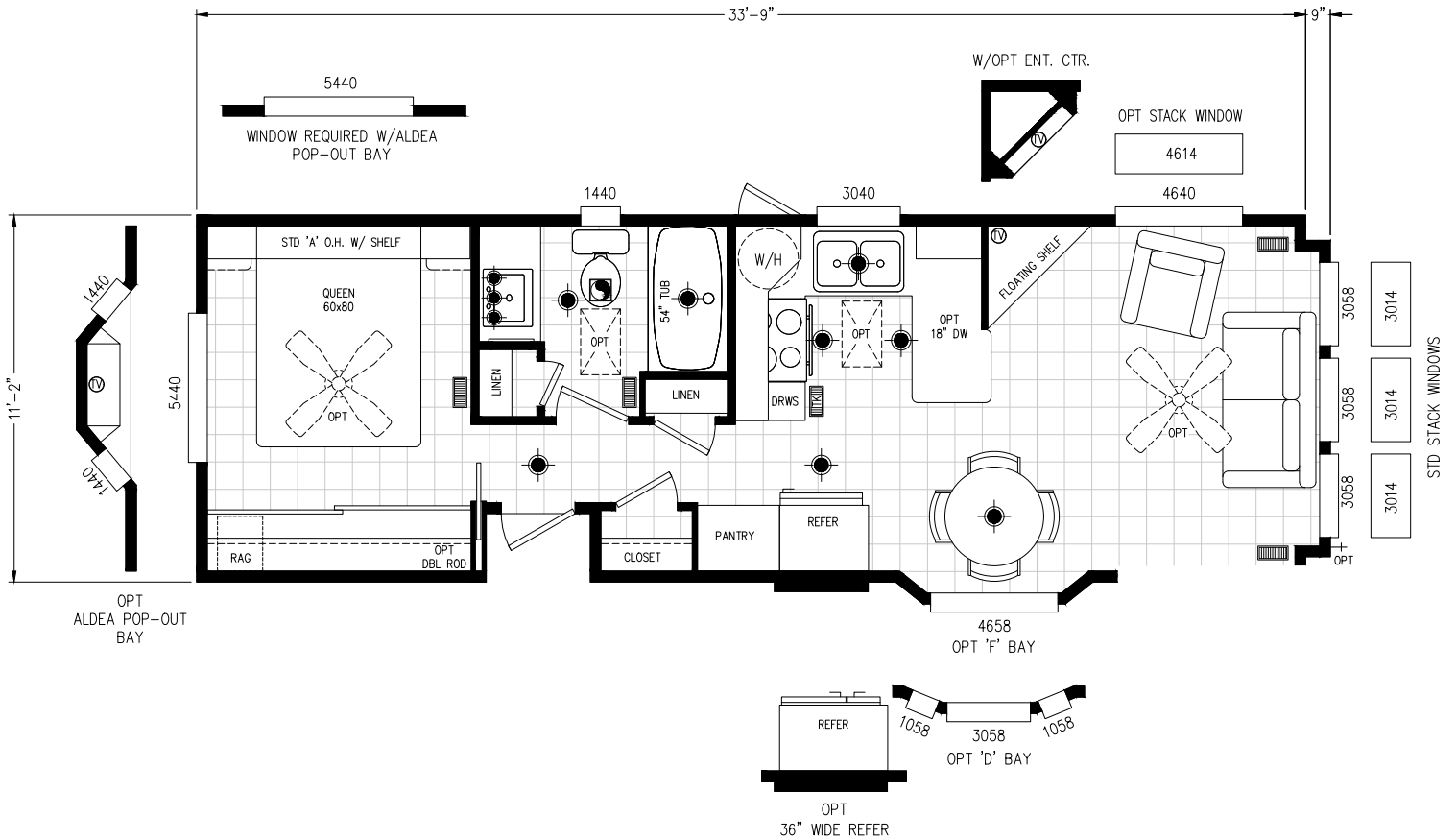
11' 2" - 33' 9"

KITCHEN STYLE

U Kitchen

ENTRANCE

Side



# SEDONA SERIES

# 120SN11351H

BEDS / BATHS / SQFT

BOX SIZE

KITCHEN STYLE

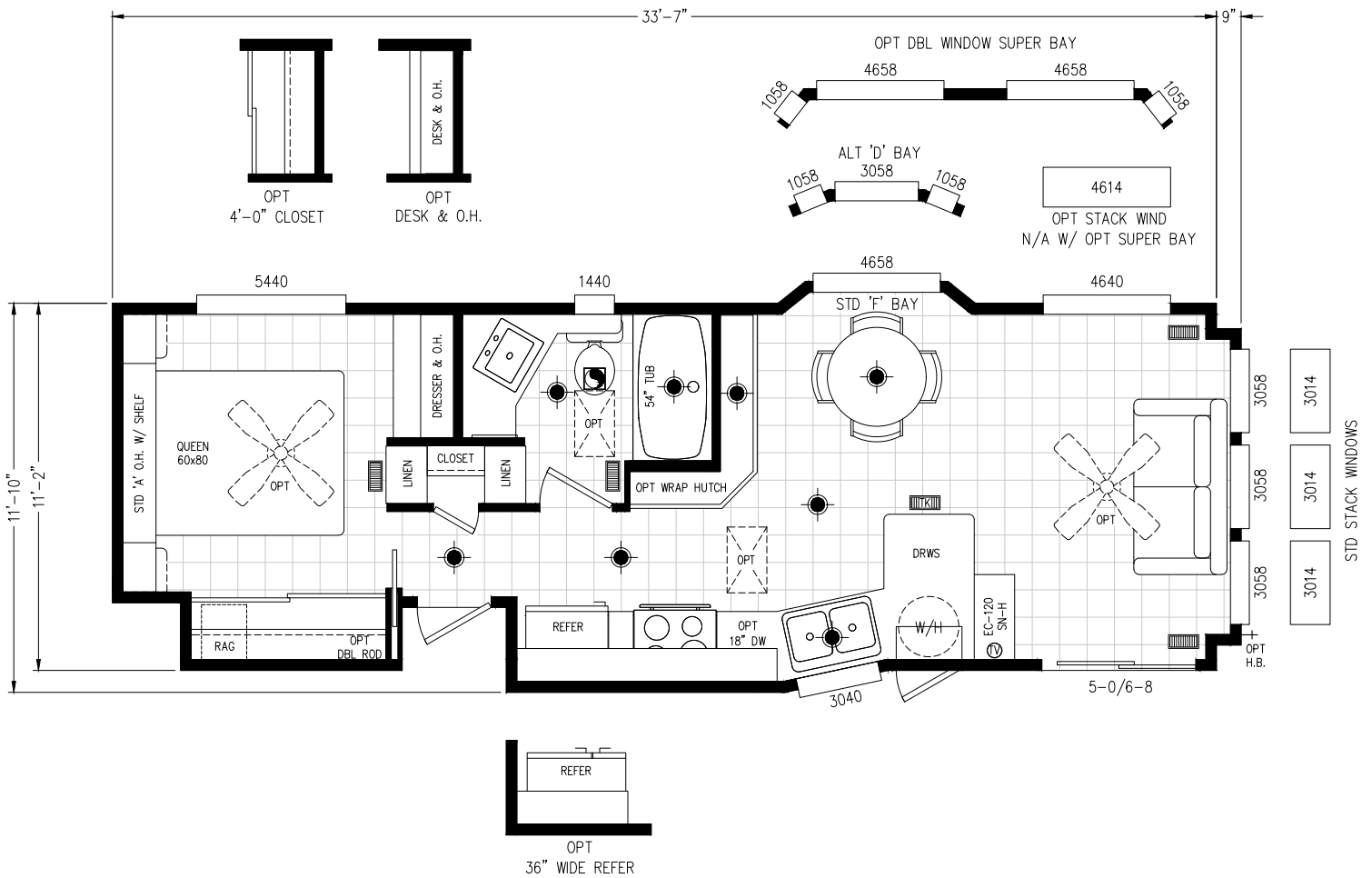
ENTRANCE

1 / 1 / 399

11'9" - 33' 7"

Galley

Side



# SEDONA SERIES

# 120SN11351J

BEDS / BATHS / SQFT

1 / 1 / 399

BOX SIZE

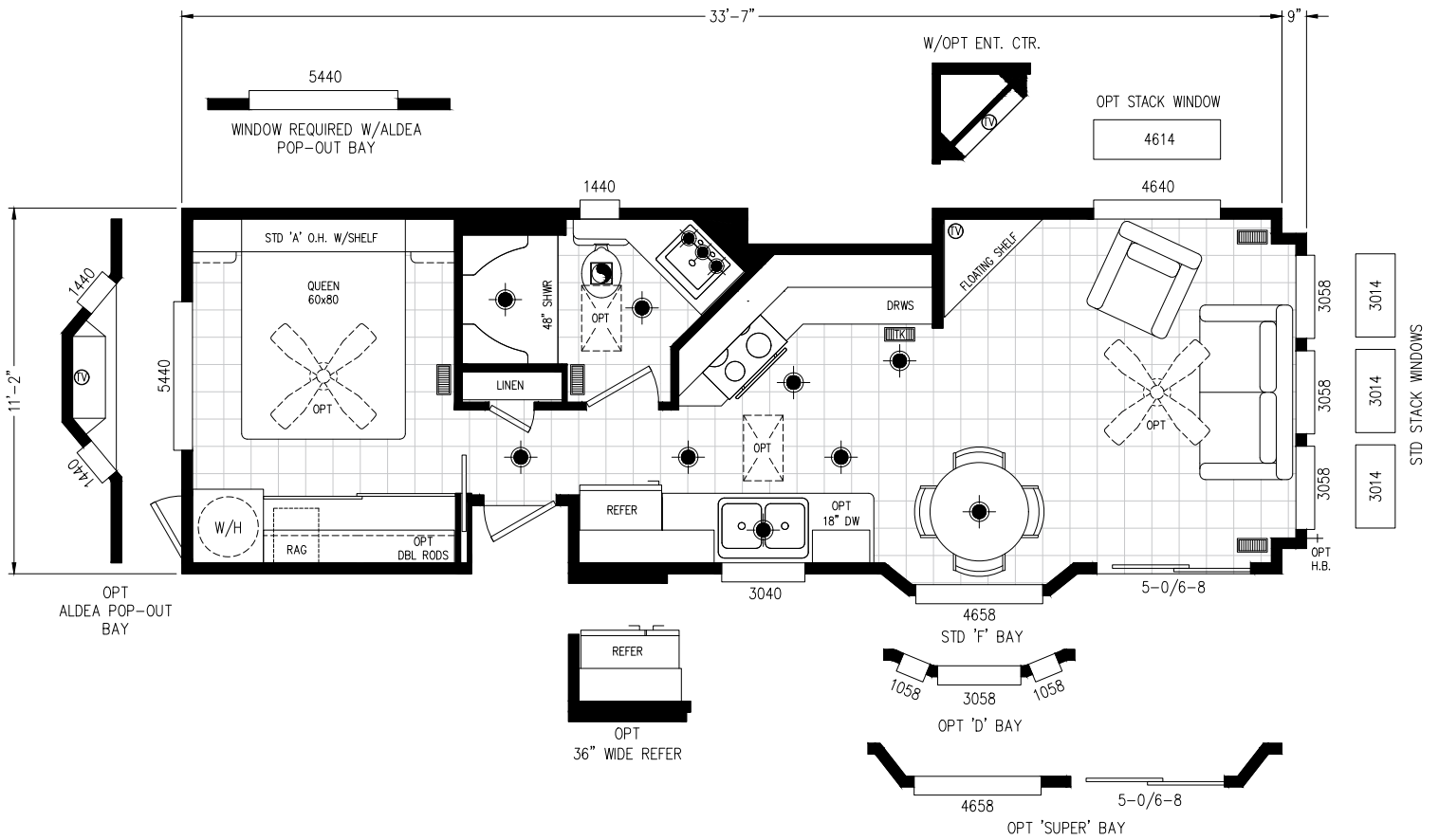
11' 2" - 33' 7"

KITCHEN STYLE

Alley Galley

ENTRANCE

Side



# SEDONA SERIES

# 120SN11351K

BEDS / BATHS / SQFT

1 / 1 / 399

BOX SIZE

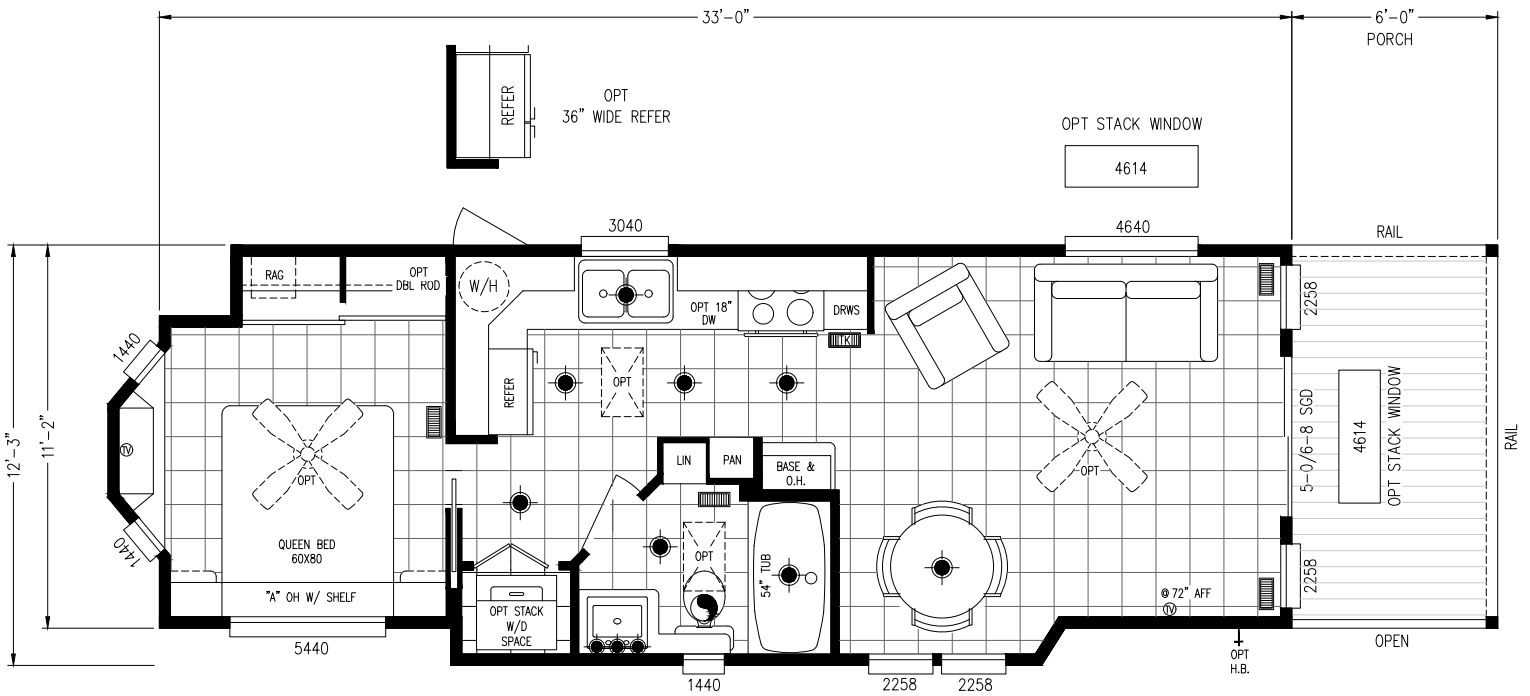
12' 1" - 33'

KITCHEN STYLE

Carousel

ENTRANCE

Front w/ Porch



MODEL • 120SN11351K

## SEDONA SERIES

## CHOICES & OPTIONS

### POPULAR OPTIONS

- Vinyl Plank Flooring throughout
- Beko Stainless Steel Appliances
- Solid Surface Countertops
- Full-Height Ceramic Tile Backsplash
- Kitchen Faucet Pulldown Sprayer
- 39" Overhead Cabinets
- Undermount Stainless or Farmhouse Sink
- Enclosed Shower with Full Shower Tile
- Solid Surface Countertops
- Metal Roof - Galvanized
- Tankless Water Heater - Gas
- Ceiling Fans in Living and Bedroom

### DECOR CHOICES

We offer decor choices including flooring, tile backsplash, countertops, paint choices and much more.



### PREMIUM APPLIANCES

We are proud to offer Beko industry-leading appliances.



### FLOOR PLAN OPTIONS

- Extended Bays
- Stack Windows
- Entertainment Centers
- Storage Cabinets

### NAME BRAND MATERIALS



## SEDONA SERIES

## STANDARD FEATURES

### INTERIOR

- \* 9' Sidewalls with flat ceilings throughout
- \* White interior passage doors
- \* Tape and textured walls with rounded corners
- \* White interior paint throughout
- \* Basic TV Shelf
- "Latitude Series" flat Interior door lever hardware
- 2" White faux wood blinds T/O \*except stack windows
- Congoleum Lino floor covering throughout
- 4" can lighting throughout \*bulbs not included
- Smoke detector and fire extinguisher
- LP Leak Gas Detector

### KITCHEN

- \* Black 30" gas range with coil burners
- \* Black 16.9 cu. ft. double door frost free refrigerator
- \* Black 30" range hood with exhaust fan and light
- \* Laminate countertops with 4" backsplash
- \* Single lever kitchen faucet
- \* Matching woodgrain overhead cabinet interiors
- Hardwood cabinet doors
- Small profile cove molding on cabinet overheads
- Residential style cabinet door handles and pulls
- Drawers with double steel roller guides
- Hidden cabinet door hinges
- Stainless steel kitchen sink

### BED & BATH

- \* Choice of fiberglass one piece tub/shower or shower only
- \* Laminate countertops with self edge
- \* 4" laminate backsplash
- Square white drop-in lavy sink
- Residential grade and style bathroom faucet
- Residential grade tub diverter with shower head
- Recessed medicine cabinet on side or front of lavy
- Satin towel bar and tissue holder
- Full width wardrobe with mirrored sliding doors
- Egress bedroom window

### EXTERIOR

- \* Square front pop-out front end elevation
- \* Vertical Exterior Siding LP Smart Panel
- Architectural shingled roof
- Rear door with window, mini blind, and deadbolt
- Exterior lights at each door
- White vinyl framed, low "E", dual glaze windows
- White aluminum framed dual glaze sliding glass door
- Front eave overhang
- Exterior GFI receptacle by sliding glass door

### MECHANICAL

- \* 20-gallon fast recovery electric water heater with exterior access door
- \* R-11 fiberglass floor insulation
- \* R-11 fiberglass sidewall insulation
- \* R-22 cellulose blown insulation
- PEX waterlines with low point drain
- UL. approved electrical devices throughout
- 50-amp exterior main panel service with 25' supply cord
- Easy touch rocker light switches throughout
- Black iron gas pipe run to rear of unit
- Under sink waterline shut-off valves
- Interior water heater switch on electric water heater
- Pre-wire for ceiling fan in living room and bedroom

### CONSTRUCTION

- Full 10" I-beam chassis construction
- Transverse 2" x 6" floor joists
- Detachable hitch from main chassis
- Woven simplex underbelly material
- 8' x 12' high density floor decking
- 2" x 4" sidewalls 16" O.C.
- Pre-engineered scissor trusses 16" O.C.
- 8-strand wire for on-site HVAC
- 30 gauge steel strapping for truss to sidewall and floor to sidewall strength
- RVIA / ANSI 119.5 approved

\* Series Specific Standard Features

